

Section 1:

Constructing La Constructa

Section 2:

The Structure Of Talent And Dependability

Section 3:

The Tools for Added Efficiency

Section 4:

Solid Results

Section 5:

The Quality Difference

Section 6:

Reference Letters

PREQUALI FICATION FILE

SECTION 1

CONSTRUCTING LA CONSTRUCTA

1. HISTORY OF SUCCESS

For over 46 years, La Constructa has provided clients with exceptional services and solid results.

Founded in 1966, La Constructa began as a General Contractor and Construction Manager under the name of EJM Contracting. 1994 marked a turning point.

Young partners joined the firm, bringing a new vision to La Constructa. Building on its already solid record and history, the firm advanced its reputation in constructing landmark structures by merging innovative and traditional strategies. From that point onwards, the firm has been the first choice for discerning clients who value quality, creativity and know-how.

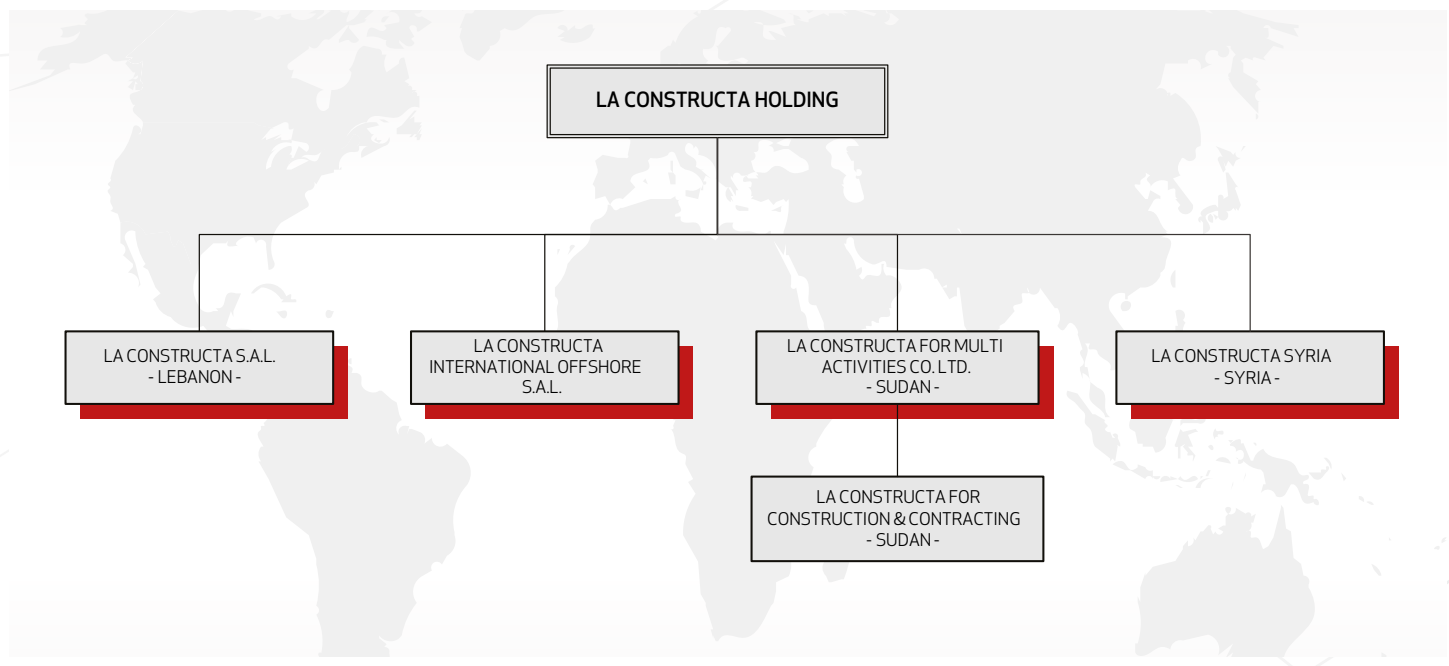
LA CONSTRUCTA'S EVOLUTION AT A GLANCE:

- SHIFT TO YOUNG AND DYNAMIC LEADERSHIP
- FOCUS ON QUALITY AND EXCELLENCE (ISO CERTIFICATION)
- LOCAL INSIGHT AND GROWING REGIONAL NETWORK
- PROVEN TRACK RECORD AND EXPERTISE

In 1998, La Constructa became the first General Contracting, Construction Management and Project Management company in Lebanon to be awarded the ISO 9002:1994 certification for quality and excellence in the field. This international sign of recognition is testament to La Constructa's dedication to the highest standards of quality in construction and focus on client services. This commitment to quality and client satisfaction is at La Constructa's core to this day. When you work with La Constructa, the difference is evident in every aspect.

2005 was another pivotal year. The firm underwent major restructuring which propelled La Constructa into a new era of growth and empowered it to take on larger projects in Lebanon and Syria. In 2006, as part of its strategy, the firm began to witness significant regional growth, launching operations in Sudan under the name of *La Constructa for Construction and Contracting* and its offshore company, *La Constructa International Offshore s.a.l.*, as a vehicle for further international expansion. The firm's reach continued to extend well into 2009 when it established *La Constructa Syria* to provide complete support for all operations in the Syrian market. This shows the firm's keenness to provide clients with a prompt response at all times and on-the-ground local expertise.

FIGURE 1:
SHOWS LA CONSTRUCTA'S NETWORK OF COMPANIES.



2.EDGE TODAY

Today with La Constructa, you get support each step of the way, unrivalled dependability, transparency, in-depth expertise, professionalism and cost-effective solutions. Why?

Because La Constructa has evolved over the years and yet some essential things have not changed. From day one La Constructa has successfully met every challenge, maintained high-quality workmanship, set new standards for the industry, and earned the highest possible ratings from syndicates and public institutions-

- Category A - Syndicate of Lebanese General Contractors
- Category A - Ministry of Public Works
- Category A - Chamber of Commerce and Industry
- 5 stars - CDR Qualified for Projects above \$20 million USD

These strengths make La Constructa the firm that it is today: one of the leading construction companies in the countries it operates in. With an ISO 9001:2008 certified Quality Management System, vision, client-focused approach, and centralized organization, La Constructa pledges to offer you continual improvement and advancement coupled with reliable services and on-time delivery.

3.PROFESS IONAL SER VICES

Dedicated to building its solid reputation and satisfying your needs (regardless of how complex or challenging your project is), La Constructa offers complete turn-key construction and management services.

The firm's services stand out because of: state-of-the-art execution techniques; long-standing experience; high international standards of quality; and local insight and regional exposure.

The excellent services are further heightened by a true concern for client satisfaction, transparency, open communication and the ability to answer clients' specific needs regardless of project size or complexity. These elements come together to ensure you will have the results you want.

La Constructa's services cover:

GENERAL CONTRACTING

La Constructa's most sought after service is general contracting for all types of civil and electro-mechanical works. This is done via a hands-on approach that involves the firm effectively handling all the required works on its own. This forte is coupled with the latest equipment, specialized expertise and vigilant on-site supervision. This ensures you enjoy the highest standards of quality, timely completion, and the most competitive prices.

MANAGEMENT CONTRACTING

La Constructa is here to speed up the work process. Its management contracting services are ideal for fast-track projects that require the construction works to take place in parallel with the design development. This service from La Constructa presents many advantages, including: fast track operations; the flexibility to deal with unforeseen changes; and cost savings from design and execution efficiencies. It also frees you from considerable administrative burdens and provides you with the advantage of having one single entity with responsibility and full control of the construction process through all its phases.

PROJECT & CONSTRUCTION MANAGEMENT

La Constructa's project and construction management services are a great way to ensure fast-track operations. They maximize competition, are flexible in dealing with unforeseen changes, and reduce costs throughout the design and construction phases. This means you get more added value for less. La Constructa solutions include:

- Overall project management
- Value engineering and constructability studies
- Tender and contract administration
- Quality, cost and time control
- Site management and the coordination of subcontractors
- Periodic project status reports

BUILD-OPERATE TRANSFER (BOT)

La Constructa is a pioneer in Build-Operate-Transfer (BOT) in Lebanon's private sector. The firm meticulously studies projects, builds and operates them for an agreed time-frame before transferring the project to you. La Constructa first used this model for a parking facility and given the success and high level of client satisfaction is now providing this service as part of its regular offerings. This shows the firm's innovative drive to provide you with unique services that answer your evolving needs while unburdening you in these busy and fast-paced times.

4.DIVERSE EXPERTISE FOR DIFFERENT PROJECTS

There is no such thing as "one size fits all" and hence tailor-made solutions work best. La Constructa understands that each project, client and stakeholder has different needs. The firm effectively answers varied needs via expertise that covers many sectors and successfully addresses the challenges inherent in each. Through specialized expertise, focused insight and global perspective, La Constructa brings many projects to life, including:

- Offices, commercial towers and complexes
- Banks
- Embassies
- Residential buildings and complexes
- Universities and schools
- Hotels
- Villas and private residences
- Industrial facilities
- Hospitals
- Renovation and rehabilitation
- Roads and bridges

SECTION 2

THE STRUCTURE OF TALENT AND DEPENDABILITY

1. THE STRUCTURE OF TALENT AND DEPENDABILITY

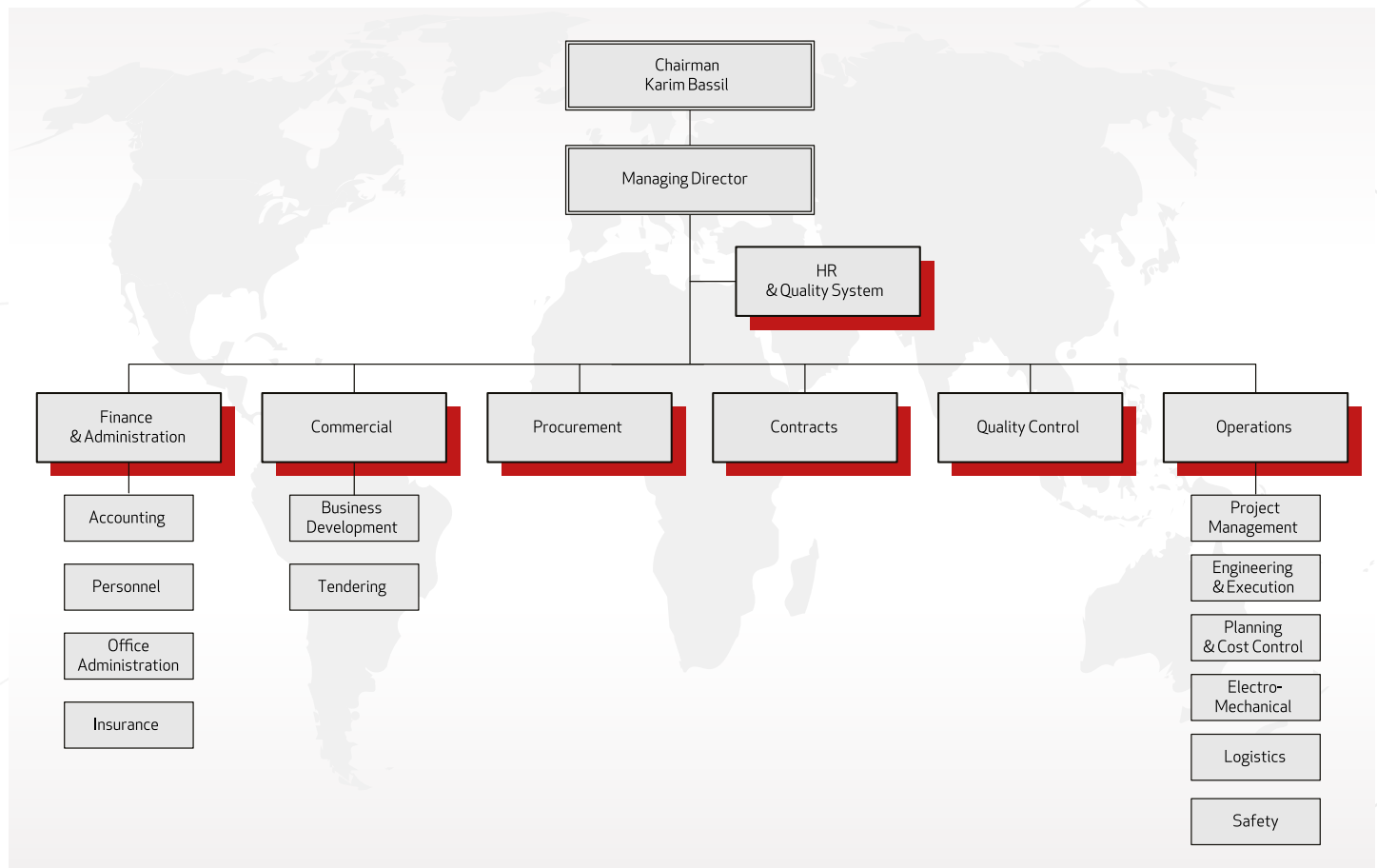
A firm is as good as its team and organization. La Constructa delivers professionalism at all times thanks to its internal structure and talented experts.

The organization is headed by Karim Bassil (Chairman of the Board) and is guided by a management team made up of highly experienced individuals who have been working in the construction industry for over three decades.

Their experience has been amassed from working in key managerial positions at international contractors in the Middle East, Europe and the United States. They bring this global exposure to the forefront of La Constructa.

The management is in turn supported by a team of talented and knowledgeable handpicked construction professionals. This ensures your project gets the specialized professionalism it deserves and is always successful. Since La Constructa is centrally organized, its services are consistently reliable and its operations are streamlined. This also empowers the firm to draw on each department's expertise and problem solving abilities.

FIGURE 2: DETAILS THE FIRM'S STRUCTURE. THIS STRUCTURE EMPOWERS LA CONSTRUCTA TO DELIVER RELIABLE SERVICES BOLSTERED BY REAL EXPERTISE AND EXPERIENCE.



2.INSIDE THE TEAM

La Constructa's carefully selected professionals build the foundations to the firm's dependability and to the ultimate success of your project. Each member is here to address your needs and to guarantee you get the results you want.

KEY PERSONNEL

NAME	POSITION	YEARS OF EXPERIENCE	YEAR OF JOINING CO.	QUALIFICATIONS/DEGREES
Karim Bassil	Chairman	20 years	1994	Industrial and Manufacturing Engineering - Boston University
Roland Gebara	Advisor to the Chairman	23 years	2011	Civil Engineering - AUB Master Structural - McGill MBA Finance - Wharton
Maroun Ibrahim	Finance and Administration Manager	19 years	1994	Gestion des Organisations - Quebec University CMA
Rima Makhoul	HR and Quality System Manager	11 years	2002	Management and Business Administration - USJ SPHR
Touma Kabakji	Operations Manager	20 years	2006	Civil Engineering - ESIB
Mike Abdo	Tendering and Contracts Manager	17 years	2005	Civil Engineering - LU/AUB
Katia Melhem	Procurement Manager	15 years	2012	Civil Engineering - LU
Richard Bassil	Projects Manager / Logistics Manager	22 years	1996	Civil Engineering - Florida Institute of Technology
Issa Saleh	Project Manager	13 years	2005	Civil Engineering - ESIB
Simon Hage	Project Manager	12 years	2012	Civil Engineering - LU MBA - USJ
Tjilert Aoun	Construction Manager	9 years	2007	Architecture - LU

SECTION 3

THE TOOLS FOR ADDED EFFICIENCY

1. THE TOOLS FOR ADDED EFFICIEN CY

To ensure you enjoy fast, efficient and cost-effective results, La Constructa has a wide range of equipment ready for use. This is advantageous since it significantly speeds up the work process and lets the firm offer competitive prices. Diverse equipment to answer the needs of different projects:

LIST OF MAJOR EQUIPMENT

MAJOR EQUIPMENT TYPE	QUANTITY AVAILABLE
Tower Crane SCMF0/23B, height under hook 61.4 m, jib length 50 m, max load 10 t, tip load 2.3 t	2
Tower Crane Potain, Type 643 J, 5 speeds, 43.15m boom length, 43m free height	1
Tower Crane Potain, Type 646 NL/SM, 5 speeds, 42m boom length, 42m free height	1
Tower Crane Potain, Type 647 NL/SM, 5 speeds, 42m boom length, 42m free height	1
Passenger Hoist (Alher) / 1,200 Kg, 52.6m high, 27m.min speed, cabin size 180x200x200	1
Passenger Hoist (Alimak Scando) / 1,150 Kg	1
Winch – ECE / 1,000 Kg	1
Winch / 750 Kg	1
Winch / 500 Kg	2
Welding machine, Miller Thunderbolt 225	1
Welding machine, Deca Domus 210CU, 180 Amp, 230/400V, 50Hz	1
Steel Bending machine GOCMAXAN B36, up to D=32	2
Steel Bending machine Oscan C.R., up to D=36	2
Steel Bending machine Simpedit 3035, up to D=32	2
Steel Cutting machine GOCMAXAN M36, up to D=32	2
Steel Cutting machine Oscan, Type 18000, up to D=34	2
Steel Bender & Cutter, up to D=34	1
Plate Compactor, Robin VP 2050R / 106 Kg	1
Plate Compactor, Dynapac LG450 / 492 Kg, 50 KN, 3000 rpm	1
Plate Compactor, Dynapac LG200 / 256 Kg, 36 KN, 2850 rpm	1
Concrete Powerfloat, Toku	1
Concrete Vibrator, Robin, D=50	5
Concrete Vibrator, M3000, D=45, 14m ³ /h	1
Concrete Vibrator, Dynapac, D=50	6
Concrete Vibrator, Poker, D=35	2
Air Compressor Holman Zitair, equipped with 2 hammers	2
Air Compressor Holman 51, equipped with 2 hammers	1
Air Compressor ECS	1
Air Compressor, Atlas Copco, XAS 97 Dd	1
Pneumatic Breakers, TEX P60	1
Demolition Hammer, DUSS PK 150 / 1,300 W	1
Pneumatic rock drill, Atlas Copco, DKR 36	1
Drill, AEG	2
Drill, FDS-500B	1
Electrical Saw, AEG	2
Electrical Saw, Sata	1
Flex self-levelling crossline for interior work, laser measuring tech.	1
Water Pump, Pedrollo	1
Portable Blower, Crown, 380W	1

MAJOR EQUIPMENT TYPE	QUANTITY AVAILABLE
Vacuum Cleaner	1
Bobcat 751 ingersoll-rand	1
Bobcat 753 ingersoll-rand	1
Bobcat 773 ingersoll-rand	1
Unloader Lombardini	1
Generator Perkins JGP200H / 200 KVA	1
Generator Perkins / 165 KVA	1
Generator Iveco / 150 KVA	1
Generator Cummins / 100 KVA	1
Generator Cummins / 65 KVA	1
Generator Falcon / 55 KVA	1
Generator Deutz / 50 KVA	1
Generator Deutz / 35 KVA	1
Generator Perkins / 7.5 KVA	1
Generator Lister / 7.5 KVA	1
Fences (Size 1.3m x 2.2m)	175 pcs
Prefabricated House (Size 3m x 9m)	3
Prefabricated House (Size 3m x 6m)	2
Prefabricated House (Size 3m x 4.5m)	1
Bathroom (Size 1.5m x 1.5m)	5
Bathroom (Size 3m x 3m)	1
Pickup Nissan / 2 Tons	1
Pickup Mitsubishi / 4 Tons	1
Pickup Mitsubishi / 5 Tons	1
Pickup Mitsubishi Canter	1
Chevrolet Optra	1
Water Truck Nissan 15000L	1
Regular scaffolding	10,000m ²
Regular scaffolding	6,000m ²
Slab Formwork	
Cuplock system with decking beams and infill beams. Coverage area: one full floor of propping and decking (1,3400m ²)	1
Kwikstage drop head system with possibility of early strike, using Kwikstage scaffolding with decking beams and infill beams. Coverage area: one full floor of propping and decking (1,000m ²) + half floor of propping only (500m ²) Grid size: 2.4m x 1.2m Floor Heights: 3.25m – 3.75m – 4.75m	1
Regular props, up to H=3m	4,000 pcs
Heavy Duty Props, up to H=4m	2,500 pcs
Drop head system on post, H=6m, coverage area=4,000m ² System composed of heavy duty props, climbing system, adjustable drop head top, adjustable base, decking w/ girder and beams	1
Heavy duty scafding, scaffold double props, H=6m, coverage area=1,000m ²	1

MAJOR EQUIPMENT TYPE	QUANTITY AVAILABLE
Regular drop head system, H=3m, coverage area=1,500m ² System composed of heavy duty props with shoring frame drop head, transverse beam and adjustable transverse beam, drop head girder and adjustable drop head girder. Similar to SGB metri form formwork system	1
Heavy duty props w/bracing, H=6m, coverage area=1,000m ²	1
Wall Formwork & Platforms for elevator voids	
- Big panels system made of superslim soldiers with GTX-Timbers as horizontal wailers including all accessories. - Klik klak platforms for the shafts (elevator voids) Coverage area: 350m ² for the cores + 100m ² for basement walls Shafts area=50m ² - Stud Panel similar to RMD super Slim Soldier. System composed of Stud or Soldier with horizontal waling, quick thread tie, push pull prop, etc... Coverage area=400m ² . - One side wall shuttering, for area=200m ² . System composed of diagonal and horizontal stud with a corner attachment for vertical vs horizontal studs and adjustable adaptor for diagonal bracing	1
Column Formwork	
Steel formworks for circular and rectangular columns - 2 Sets of circular columns (Ø=70cm) - 1 Set of circular columns (Ø=90cm) - 2 Sets of adjustable columns (70 & 90cm) - 6 Sets of rectangular columns (170 x 40cm) - 10 Sets of rectangular columns (120 x 40cm) Height of each set: 3.3m	1
Climbing Platforms	
Complete climbing platforms (1.8m x 2.0m) made of extra wide brackets, GTX beams, scaffold tubes and couplers	13
Surveying Equipment	
7" total station, Leica TCR407 power, with re flectorless EDM, laser plummet & 1 keyboard	1
Automatic level, Leica NA720, 360 degrees, with accessories, 20x telescopic magnification	1
Leica Aluminum telescopic tripod	1
Leica Aluminum telescopic staff BTL5D, extendable to 5m	1
Rotating laser, Topcon RL-VH3D	1
Aluminum tripod	1
Electronic sensor model	1
Level Kern GK1-A Topcon-Auto level-AT GA	2

SECTION 4

SOLID
RESULTS

1.SOLID RESULTS

True professionalism is something that shows through end results and a firm's track record. To date, La Constructa has successfully brought many projects to completion. Some of its projects are high-profile and have garnered international interest and recognition.

CURRENT PROJECTS

PROJECT INFORMATION				CONTRACT INFORMATION				CLIENT INFORMATION	
Project Name	Location (City & Country)	Type of Facility Note 1	Built-up Area (m²)	Contract Value (US\$)	Period From (mm/yy)	Period To (mm/yy)	Type of Service Note 2	Client Name & Contact Person	Telephone # Fax #
Concorde Hotel Renovation	Hamra - Bliss street - Lebanon	HO	3,850	3,465,000	Aug. 2012	Jun. 2013	MC	Ghreiwati Group / Mr. Issam Ghreiwati	T: 961 1747931
Byblos Bank Tabaris Branch	Tabaris - Lebanon	B	470	684,000	Aug. 2012	Mar. 2013	MC	Byblos Bank s.a.l.	T: 961 1335200 F: 961 1339474
Byblos Bank Batroun Branch	Batroun - Lebanon	B	420	487,000	Jul. 2012	Feb. 2013	MC	Byblos Bank s.a.l.	T: 961 1335200 F: 961 1339474
Byblos Bank Jounieh Saray Branch	Jounieh - Lebanon	B	1,000	800,000	Jun. 2012	Dec. 2012	MC	Byblos Bank s.a.l.	T: 961 1335200 F: 961 1339474
AUBMC – Administrative Building	Beirut - Lebanon	H	7,000	7,568,000	May 2012	Mar. 2014	MC	American University of Beirut / Mr. Bassem Barhoumi	T: 961 1350000
Byblos Bank Furn El Chebbak Branch	Furn El Chebbak - Lebanon	B	500	570,000	May. 2011	Nov. 2012	MC	Byblos Bank s.a.l.	T: 961 1335200 F: 961 1339474
AUBMC – Lobbies upgrade	Beirut - Lebanon	H	1,100	1,616,000	Jan. 2012	Jan. 2013	MC	American University of Beirut / Mr. Bassem Barhoumi	T: 961 1350000
AUB – ADA Dodge Hall	Beirut - Lebanon	B	285	247,966	May 2012	Aug. 2012	MC	American University of Beirut / Mr. Bassem Barhoumi	T: 961 1350000
AUB Irani-Oxy Engineering Complex	Beirut - Lebanon	B	18,000	19,010,000	Oct. 2011	Oct. 2013	MC	American University of Beirut / Mr. Bassem Barhoumi	T: 961 1350000
AUB - Old Pharmacy Building	Beirut - Lebanon	H	325	292,600	Aug. 2011	May 2012	MC	American University of Beirut / Mr. Bassem Barhoumi	T: 961 1350000
West End Offices Building Medawar 33	Gemmayze - Lebanon	B	7,200	5,682,000	Oct. 2010	Oct. 2012	MC	West End s.a.l. / Mr. Sherif Kamal	T: 961 1444005 F: 961 1444006

Note #1:

B	Office Building	H	Hospital
C	Commercial	HO	Hotel
I	Industrial	RC	Residential Complex
		RP	Residence Private

Note #2:

CM	Construction Manager
MC	Main Contractor
PM	Project Manager

EXECUTED PROJECTS
(DURING THE LAST SEVEN YEARS)

PROJECT INFORMATION				CONTRACT INFORMATION				CLIENT INFORMATION		
Project Name	Location (City & Country)	Type of Facility Note 1	Built-up Area (m²)	Contract Value (US\$)	Period From (mm/yy)	Period To (mm/yy)	Type of Service Note 2	Client Name & Contact Person	Telephone # Fax #	
Convivium VI	Gemmayze - Lebanon	RC	24,000	15,550,000	Aug 2008	Jun 2012	MC	Saifi 71 s.a.l.	T:9611560611 F:9611560664	
Byblos Bank Branches (from 2006 -2012)	Lebanon	B	20,000	19,950,000	2006	2012	MC	Byblos Bank s.a.l.	T: 9611 335200 F: 9611 339474	
Rebeiz Residential Building	Beirut - Lebanon	RC	3,800	4,782,000	Aug. 2009	May 2012	MC	Rebeiz Family / Mr. Toufic Rebeiz	T: 9611 5 81118 F: 9611 5 81179	
ARAPPP CO Headquarters	Khartoum - Sudan	B	7,250	13,567,125	Sep. 2008	Nov. 2011	MC	Arab Poultry Production & Processing Co.Ltd. / Mr. Jalal Ben Chedly	T: 249 183673113 F: 249 183688444	
Kuwaiti Diplomats Residence	Yaafour - Syria	RC	13,500	2,543,478	Apr. 2009	Nov. 2010	MC	Projacs Syria for Government of Kuwait-Ministry of Foreign Affairs/Khaled Sweilam	T: 965 97223755	
The Sultan Center	Downtown Beirut - Lebanon	C	5,780	2,200,000	Jun. 20 09	Mar. 2010	MC	TSC for Trading & General Contracting W.L.L. / Mr. Munish Gujral	T: 965 4343155 F: 965 4312842	
AUB Medical Center	Beirut - Lebanon	H	2,200	1,394,747	Jul. 20 08	Dec. 2009	MC	American University of Beirut / Mr. Bassem Barhoumi	T: 9611 350000 F: 9611 360107	
Extension of Kefraya Winery	Bekaa - Lebanon	I	4,000	2,046,000	May 2009	Dec. 2009	MC	Château Kefraya s.a.l./ Mr. Daniel Chartouni	T: 9611 494171 F: 9611 485430	
Convivium V - Additional Works	Gemmayze - Lebanon	RC	2,500	1,000,000	Aug. 2009	Oct. 2009	MC	B.R.E.I. s.a.l. / Mr. Jonathan Woods	T: 9611 560611 F: 9611 560664	
Marwan and Carole Marchi's Apartment	Sursock - Lebanon	RP	1,100	1,500,000	Jul. 20 08	Mar. 2010	MC	Mr. Marwan Marchi	T: 1 646 2705791	
ADIR Insurance Syria Branches	Aleppo - Syria	B	250	303,074	Jun. 2009	Sep. 2009	PM/CM	ADIR Insurance / Mr. Raja Mouawad	T: 963 933824217	
Fresh Produce Storage & Packing Facility	Chtaura - Lebanon	I	12,000	7,000,000	May 2008	Jul. 2009	MC	National Produce Packaging Company s.a.l. / Mr. Maurice Collis	T: 9611 569090 F: 9611 566363	
ADIR Insurance Lebanon Branches	Dora - Lebanon	B	320	262,491	Apr. 2009	Jul. 2009	MC	ADIR Insurance / Mr. Rene Khat	T: 9611 256 290 F: 9611 256 293	
Byblos Bank Syria Branches (in 2009)	Syria (Current branches: Abbasseyeen, Daraa	B	620	874,138	J an. 2009	Dec. 2009	PM/CM	Byblos Bank s.a.l. / Mr. Walid Abdel Nour	T: 9611 335200 F: 9611 339474	
Convivium V	Gemmayze - Lebanon	RC	16,000	13,310,051	Jan. 2005	Jun. 2009	MC	B.R.E.I. s.a.l.	T: 9611 560611 F: 9611 560664	
Byblos Bank Sudan Branch	Bahri, Khartoum - Sudan	B	2,000	5,077,349	Apr. 2007	May 2009	MC	Byblo s Bank s.a.l. / Mr. Laurent Hawwat	T: 9611 335200 F: 9611 339474	
Convivium III - Penthouse	Gemmayze - Lebanon	RC	780	755,505	Nov. 2007	Apr. 2009	MC	Frabass	T: 9611 560611 F: 9611 560664	
Convivium VII - Phase I	Badaro - Lebanon	RC	12,000	2,722,500	Dec. 2007	Apr. 2009	MC	B.R.E.I. sal and Mazraa 1930 sal	T: 9611 560611 F: 9611 560664	

PROJECT INFORMATION				CONTRACT INFORMATION				CLIENT INFORMATION		
Project Name	Location (City & Country)	Type of Facility Note 1	Built-up Area (m²)	Contract Value (US\$)	Period From (mm/yy)	Period To (mm/yy)	Type of Service Note 2	Client Name & Contact Person	Telephone # Fax #	
Embassy & Consulate of Kuwait	Beirut - Lebanon	B	5,400	3,716,355	Feb. 2006	Jun. 2008	MC	Government of Kuwait - Ministry of Foreign Affairs / Mr. Abdel Wahab El Babbain	T: 9611 822516 F: 9611 842220	
ADIR Insurance Syria Branches	Damascus - Syria	B	400	294,000	Jan. 2008	May 2008	PM/CM	ADIR Insurance / Mr. Raja Mouawad	T: 963 933824217	
Faraya 1950	Ouyoun El Siman - Lebanon	RC	5,000	4,500,000	Aug. 2005	Dec. 2007	MC	Oxygen Development s.a.l. / Mr. Wissam Jabr	T: 9611 790658 F: 9611 795177	
Byblos Bank Regional Headquarters	Jbeil - Lebanon	B	16,000	16,508,817	Jun. 2003	Nov. 2007	MC	Byblos Bank s.a.l.	T: 9611 335200 F: 9611 339474	
Byblos Bank Syria Branches (2006-2008)	Syria	B	3,215	7,419,337	Feb. 2006	Dec. 2008	PM/CM	Byblos Bank s.a.l. / Mr. Walid Abdel Nour	T: 9611 335200 F: 9611 339474	
Byblos Bank Syria Headquarters	Damascus - Syria	B	1,700	3,500,000	Aug. 2005	Jul. 2006	PM/CM	Byblos Bank s.a.l. / Mr. Walid Abdel Nour	T: 9611 335200 F: 9611 339474	
Château Kefraya	Bekaa - Lebanon	I	N/A	1,100,000	Jan. 2001	May 2006	MC	Château Kefraya / Mr. Michel de Bustros	T: 9611 494171 F: 9611 485430	
Convivium III	Gemmayze - Lebanon	RC	5,900	7,500,000	Jan. 2004	Apr. 2006	MC	B.R.E.I. s.a.l.	T: 9611 560611 F: 9611 560664	
AUB Museum	Beirut - Lebanon	E	700	656,000	Mar. 2005	Jan. 2006	MC	American University of Beirut / Mr. Samer Maamari	T: 9611 350000 F: 9611 360107	
Canadian Embassy	Jal El Dib - Lebanon	B	2,500	1,373,489	Sep. 2004	Jul. 2005	MC	Government of Canada - Department of Foreign Affairs / Mr. Bernard Terrence	T: 1 613 946 1536 F: 1 613 957 4301	
European Commission Delegation Building	Damascus - Syria	B	1,400	Confidential	Jan. 2004	Jul. 2004	CM	Delegation of the European Commission / Mr. Sami Attar	T: 963 113340111 F: 963 113311166	

Note #1 :

B Office Building
E Entertainment Facility
I Industrial

R Roadway & Parking
RC Residential Complex
RP Residence Private

Note #2:

CM Construction Manager
MC Main Contractor
PM Project Manager

CONCORDE
HOTEL

PROJECT DESCRIPTION

Concorde Hotel was owned by Ghreiwati Group since 1970. The hotel is located in Hamra, the famous commercial avenue in the heart of Beirut. It is currently under renovation process. After completion, the new 4 stars business hotel will consist of 64 rooms. It will include two meeting rooms, massage room, sauna, gymnasium club, Jacuzzi and of course a restaurant. Hotel Management and operation will be assigned to Hospitality Management Holding, a leading group in hospitality.

PROJECT INFORMATION

Name of Project	Concorde Hotel	
Location	Bliss Street, Hamra, Lebanon	
Name of Client	Ghreiwati Group	
Address	Al-Manara, Ras Beirut, Lebanon	
Contact Number	Tel: 961 1 747 931	Fax: 961 1 737 931
Name of Architect / Consultant	Joy Chahwan	
Address	Jounieh - Lebanon	
Contact Number	Tel: 961 9 831 086	Fax: 961 9 831 086
Type of Project	Hotel	
Type of Works	<div>- Demolishing works</div> <div>- Minor concrete works</div> <div>- Civil works</div> <div>- Finishing works</div> <div>- Façade works</div> <div>- Mechanical works</div> <div>- Electrical works</div>	
Description of Project	The Hotel consists of 2 basement floors including a restaurant & kitchen, ground floor including the lobbies and lounge, 8 floors, roof including a Jacuzzi, and top roof including the electro-mechanical services.	
Scope of Work	La Constructa has undertaken, as the main contractor, the renovation of the hotel including all finishing & electro-mechanical works.	
Total Built-up Area	3,850 m²	
Value	USD 3,465,000	
Project Start Date	August 2012	
Project Completion Date	June 2013	

AN EYE
ON THE PROJECT



AUBMC - ADMINISTRATIVE BUILDING

PROJECT DESCRIPTION

AUBMC-Administrative Building – This building is part of a major redevelopment and expansion of the AUB Medical Center. Its aim is to house the entire administrative staff along with several storage rooms that will be connected to the current existing phase II hospital building.

PROJECT INFORMATION

Name of Project	AUB Administrative Building	
Location	Hamra - Lebanon	
Name of Client	American University of Beirut	
Address	Hamra - Lebanon	
Contact Number	Tel: 9611 350 000	Fax: 9611 350 000
Name of Architect / Consultant	Rafik El KHoury & Partners	
Address	Bourj Hammoud - Lebanon	
Contact Number	Tel: 9611 493 150	Fax: 9611 493 151
Type of Project	Administrative building	
Type of Works	<div>- Reinforced concrete</div> <div>- Mechanical works</div> <div>- HVAC</div> <div>- Electrical works</div> <div>- Special Finishing</div> <div>- Façade works</div> <div>- Earthworks, landscaping</div>	

Description of Project

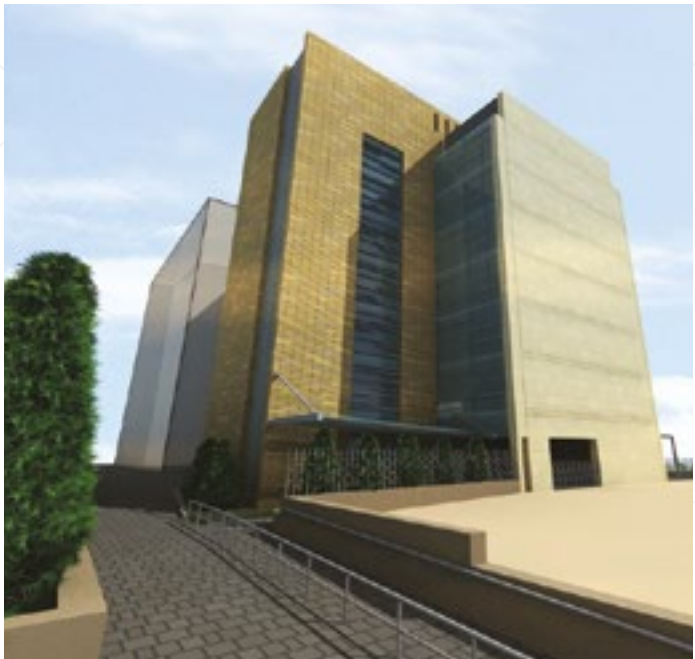
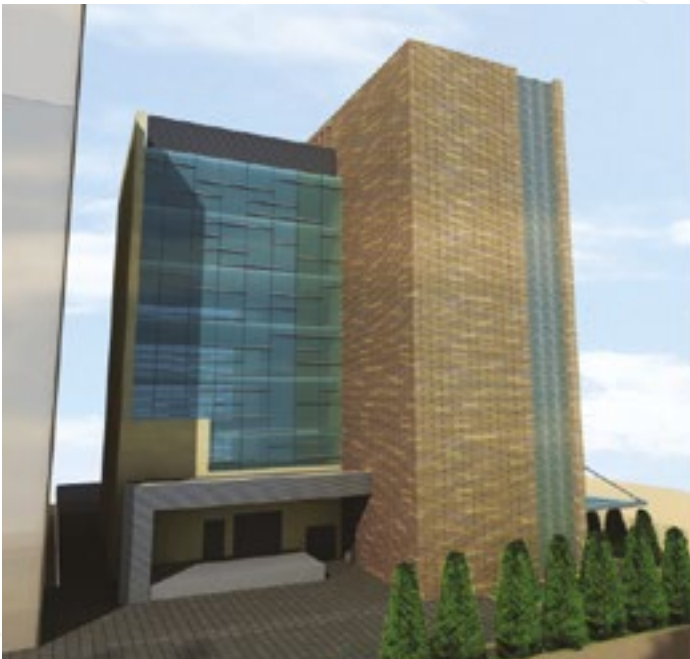
The project is an administrative office building for the AUB Medical Center, which annexes the existing phase II hospital on its southern façade. It is a concrete structure, which consists of three basements and 7 floors with a total built up area of 6500m2.

Scope of Work

La Constructa has undertaken, as the main contractor, the construction of the building including all finishing, electro-mechanical and landscaping works.

Total Built-up Area	6500m²
Value	USD 7,568,000
Project Start Date	May 2012
Project Completion Date	March 2014

AN EYE ON THE PROJECT



AUBMC - LOBBIES UPGRADE

PROJECT DESCRIPTION		
AUBMC-Lobbies Upgrade – The project aims to upgrade the existing Lobbies and entrance to the AUBMC phase II building along with improving the services provided by the hospital by adding a coffee shop and coffee bar. This project also aims to improve the fire safety in the hospital by providing a two hour fire rating to all emergency exists and evacuation paths		
PROJECT INFORMATION		
Name of Project	AUB Lobbies Upgrade	
Location	Hamra - Lebanon	
Name of Client	American University of Beirut	
Address	Hamra - Lebanon	
Contact Number	Tel: 9611 350 000	Fax: 9611 350 000
Name of Architect / Consultant	Rafik ElKHoury & Partners	
Address	Bourj Hammoud - Lebanon	
Contact Number	Tel: 9611 493 150	Fax: 9611 493 151
Type of Project	Lobbies	
Type of Works	<div>- Mechanical works</div> <div>- HVAC</div> <div>- Electrical works</div> <div>- Steel Structure</div> <div>- Special Finishing</div> <div>- Façade works</div> <div>- Fire Rating</div> <div>- Steel Staircase</div>	
Description of Project	The AUB Lobbies Upgrade is a live renovation project divided into two phases. Its aim is to provide an upgraded lobby entrance to the AUBMC phase II building with a minimum disruption to the hospital entrance. The scope of work includes demolition masonry, plaster, tiling, MEP, and façade works.	
Scope of Work	La Constructa has undertaken, as the main contractor, the demolition masonry, plaster, tiling, MEP, and façade works, along with	
Total Built-up Area	650m²	
Value	USD 1,616,000	
Project Start Date	May 2012	
Project Completion Date	June 2013	

AN EYE ON THE PROJECT



AUBADA -
DODGE HALL ART GALLERY

PROJECT DESCRIPTION

AUBADA-Dodge Hall Art Gallery – The project is a renovation of an existing hall, with the goal of it becoming an Art Gallery. The works involved are mainly finishing trades such as MEP, False Ceiling works, Stamp concrete, and changing of the existing glass of the steel door frame.

PROJECT INFORMATION

Name of Project	AUBADA – Dodge Hall Art Gallery		
Location	Hamra - Lebanon		
Name of Client	American University of Beirut		
Address	Hamra - Lebanon		
Contact Number	Tel: 961 1 350 000	Fax:	961 1 350 000
Name of Architect / Consultant	FPDU		
Address	AUB - Beirut		
Contact Number	Tel: 961 1 350 000	Fax:	961 1 350 000
Type of Project			
Type of Works	The project is a renovation of an existing hall, with the goal of it becoming an Art Gallery. The works involved are mainly finishing trades such as MEP, False Ceiling works, Stamp concrete, and changing of the existing glass of the steel door frame.		
Description of Project	The Project is the transformation of a office hall into an art Gallery. The hall is located in the Ada Dodge building, one of the oldest and most recognized building of the AUB upper campus with its signature arches and stone facade. The art gallery while upgrading the interior manages to maintain the iconic exterior.		
Scope of Work	The scope of work is the demolition of the existing interior and the upgrading of the existing MEP items, along with the all the finishing trades required for the Gallery		
Total Built-up Area	315 m²		
Value	USD 247,966		
Project Start Date	May 2012		
Project Completion Date	November 2012		

AN EYE
ON THE PROJECT



IRANI OXY
ENGINEERING COMPLEX

PROJECT DESCRIPTION

The Project consists of the execution, completion and maintenance during the defects liability period of a labotatory building located at Ain El Mraisseh at the edge of AUB campus. The project is composed of one building with 2 basements as car parks and laboratory spaces and 6 floors.

The project has applied for the LEED certificate which makes all activities in the construction process compliant with the green buildings requirements.

PROJECT INFORMATION

Name of Project	IOEC: Irani Oxy Engineering Complex	
Location	Ain El Mraisseh at the edge of AUB campus, Beirut - Lebanon	
Name of Client	FPDU-AUB	
Address	Ain El Mraisseh - Beirut, Lebanon	
Contact Number	Tel: 9611 374 374	
Name of Architect / Consultant	Nabil Gholam Architécts	
Address	Jisr El Wati, Beirut - Lebanon	
Contact Number	Tel: 9611 423 513 Fax: 9611 423 510	
Type of Project	Laboratory & University Building - AUB	
Type of Works	<div>- Earthwork, Landscaping - HVAC</div> <div>- Reinforced Concrete - Electrical Works</div> <div>- Façade Works - Laboratory Equipments</div> <div>- Mechanical Works - Special Finishing</div> <div>- CCTV System</div>	
Description of Project	The "Irani Oxy Engineering Complex" distributed over 8 floors; 2 below ground and 6 above, on the Site that is around 2200 m2 in area. It will allow for high-quality research in well-resourced laboratories equipped with the up-to-date technologies, to support education and research in the fields of Civil and Environmental, Mechanical, Electrical, and Computer engineering.	
Scope of Work	La Constructa has undertaken, as the main contractor, the construction of the building including all finishing, electro-mechanical and landscaping work.	
Total Built-up Area	14,915 m ²	
Value	USD 19,010,000	
Project Start Date	October 2011	
Project Completion Date	October 2013	

AN EYE
ON THE PROJECT



WEST
END

PROJECT DESCRIPTION

West End – This NHG’s West End Project located in Gemmayze area involves construction of a modern and elegant office tower. The Project is designed to provide an excellent corporate environment for local and foreign companies. The office tower provides natural lighting for all offices, and affords a view of the sea. Comprising ground and mezzanine floors, 10 stories, and a 5 storey basement car parking, the total build area is 7,800 m2.

PROJECT INFORMATION

Name of Project	West End
Location	Medawar 33, Rmeil, Beirut
Name of Client	National Holding Group (NHG)
Address	Pasteur Str., Gemayze, Ashrafieh - Lebanon
Contact Number	Tel: 961 1 444 005 Fax: 961 1 444 007
Name of Architect / Consultant	Haddad & Abi Rached “Insight”
Address	Bauchrieh – Metn – Lebanon
Contact Number	Tel: 961 1 895 475 Fax: 961 1 870 371
Type of Project	Office Building
Type of Works	- Concrete works (prestressed precast hollow core & post tension) - Mechanical works & HVAC - Electrical works - Architectural works - External and infrastructure
Description of Project	An office building including five basements consisting of parking, ground floor, technical floor (mezzanine), and ten floors serving as offices.
Scope of Work	La Constructa has undertaken, as the main contractor, the construction, completion, maintenance, commissioning, and handing over of the building including all finishing, and electro- mechanical works.
Total Built-up Area	7,800 m²
Value	USD 5,682,000
Project Start Date	January 2011
Project Completion Date	December 2012

AN EYE
ON THE PROJECT



REBEIZ
98

PROJECT DESCRIPTION

Rebeiz 98 – The project is located at pbt no. 98 (Ras Beirut) in Maamari Street in Clemenceau Area, Beirut. It is a luxury 10 floors’ residential building in the heart of Beirut . It overlooks the spectacular city skyline, and the panoramic views of the Mediterranean, and offers style and quality in a superb location. Comprising of 2 basements for car parking, storages, and technical rooms, and 10 storey apartments with areas ranging from 245m2 to 550m2. Large balconies and terraces merge the inside and outside to best enjoy the pleasant weather of Beirut.

PROJECT INFORMATION

Name of Project	Rebeiz 98
Location	Maamari Str., Clemenceau, Plot 98- Ras Beirut - Lebanon
Name of Client	Rebeiz Family
Address	Clemenceau - Ras Beirut
Contact Number	Tel: 961 3 750 533 Fax: 961 1 581 179
Name of Architect / Consultant	Cabinet D'Architectes Madkour (CAM)
Address	6 th floor, Aramta Centre, Antelias – Lebanon
Contact Number	Tel: 961 4 522 442 Fax: 961 4 522 439
Type of Project	Residential Building
Type of Works	- Excavation, earthworks, demolitions, and repair works - Concrete works (jacketing, reinforced concrete & post tension) - Electro-mechanical works - Architectural and finishing works - External and infrastructure
Description of Project	A residential building including two basements consisting of parking, ground floor, and ten floors serving as apartments.
Scope of Work	La Constructa has undertaken, as the main contractor, the construction, completion, maintenance, commissioning, and handing over of the building including all finishing, and electro-mechanical works.
Total Built-up Area	4,500 m²
Value	USD 4,782,000
Project Start Date	September 2009
Project Completion Date	March 2012

AN EYE
ON THE PROJECT



THE SULTAN
CENTER

PROJECT DESCRIPTION

The Sultan Center - La Constructa did the decoration works with all special finishing related to this project in a duration of 9 months.

PROJECT INFORMATION

Name of Project	TSC Signature Store		
Location	BCD - Beirut - Lebanon		
Name of Client	TSC for Trading & Contracting W.L.L.		
Address	Beirut - Down Town / Souk of Beirut		
Contact Number	Tel: 965 4343155	Fax: 965 4312842	
Name of Architect / Consultant	Samir Khairallah & Partners		
Address	Beirut - Lebanon		
Contact Number	Tel: 961 5 452793	Fax: 961 5 451899	
Type of Project	Commercial Project		
Type of Works	<div>- False ceiling</div> <div>- Tiling & Stone cladding</div> <div>- Gypsum Partitions</div> <div>- Special Finishing</div> <div>- Coordination with Electro-mechanical & refrigeration sub-contractors</div>		
Description of Project	A special supermarket store with a lounge and a variety of restaurants consisting of one floor		
Scope of Work	La Constructa has undertaken, as the main contractor, the execution of the project including the coordination with the relevant designers and the management of all involved subcontractors disciplines.		
Total Built-up Area	5,780 m²		
Value	USD 2,200,000		
Project Start Date	June 2009		
Project Completion Date	March 2010		

AN EYE
ON THE PROJECT



AUB
MUSEUM

PROJECT DESCRIPTION

AUB Museum – La Constructa did the renovation works with all special finishing related to this project in a duration of 10 months.

PROJECT INFORMATION

Name of Project	AUB Museum	
Location	Beirut - Lebanon	
Name of Client	American University of Beirut	
Address	Beirut - Lebanon	
Contact Number	Tel: 9611 350 000	Fax: 9611 360 107
Name of Architect / Consultant	Youssef Haidar	
Address	Gemmayze	
Type of Project	Entertainment Facility Building	
Type of Works	- Reinforced concrete - Structural steel works - HVAC	
	- Electrical works - Special Finishing	

Description of Project	An Archaeological Museum consisting of one floor and a mezzanine floor of a total area approx 700 m²
------------------------	--

Scope of Work	La Constructa has undertaken, as the main contractor, the renovation of the building including all finishing and electro-mechanical works.
---------------	--

Total Built-up Area	700 m²
Value	USD 656,000
Project Start Date	March 2005
Project Completion Date	January 2006

KEFRAYA
WINERY EXTENSION

PROJECT DESCRIPTION

Kefraya Winery Extension
A facility extension of Chateau Kefraya to process and bottle wine and arak in Kefraya – Bekaa.

PROJECT INFORMATION

Name of Project	Kefraya Winery Extension	
Location	Kefraya - Lebanon	
Name of Client	Chateau Kefraya s.a.l.	
Address	Beirut - Lebanon	
Contact Number	Tel: 9611 494 171	Fax: 9611 485 430
Name of Architect / Consultant	Ingevin France / OTCE Liban	
Address	Awkar - Lebanon	
Contact Number	Tel: 961 4 542 025/6	Fax: 961 4 542 615
Type of Project	Industrial Project	
Type of Works	- Earthworks - Concrete works including precast deckings - Steel Structures & sandwich panels roofs	
	- Waterproofing works - Drainage works	

Description of Project	An industrial building composed of 6 separate areas with steel structure and sandwich panels roofing.
------------------------	---

Scope of Work	La Constructa has undertaken, as prime contractor, the execution of the project including the coordination with the relevant designers and the management of all involved subcontractors' disciplines.
---------------	--

Total Built-up Area	4,000 m²
Value	USD 2,046,000
Project Start Date	May 2009
Project Completion Date	December 2009

NPPC
TEENAYEL

PROJECT DESCRIPTION		
NPPC Teenayel – A packhouse building in the Bekaa for the storage of goods, the process and the packing of fresh agriculture products of the National Produce & Packaging Company.		
PROJECT INFORMATION		
Name of Project	NPPC	
Location	Chtaura - Lebanon	
Name of Client	The National Produce and Packaging Company	
Address	Beirut - Lebanon	
Contact Number	Tel: 9611569090	Fax: 9611566363
Name of Architect / Consultant	Insight Architects	
Address	Bauchrieh - Lebanon	
Contact Number	Tel: 9611895475	Fax: 9611895475
Type of Project	Industrial Project	
Type of Works	<div><div>- Earthworks</div><div>- Reinf. concrete ground slab</div><div>- Structural frames & sandwich panels cladding</div><div>- Mechanical works</div></div> <div><div>- Electrical works</div><div>- Special Finishing</div><div>- Refrigeration works</div><div>- Fence & landscaping</div></div>	
Description of Project	An industrial building composed of 4 adjacent structural steel units, administration and offices. All infrastructure and facilities were provided with roads and landscaping works.	
Scope of Work	La Constructa has undertaken, as prime contractor, the execution of the project including the coordination with the relevant designers and the management of all involved subcontractors' disciplines.	
Total Built-up Area	12,000 m ²	
Value	USD 7,000,000	
Project Start Date	May 2008	
Project Completion Date	July 2009	

AN EYE
ON THE PROJECT



BYBLOS BANK
TOWER

PROJECT DESCRIPTION

Byblos Bank Tower – One of the first high-rise buildings in Lebanon, this 26 story “Intelligent Building” was completed by La Constructa on a turnkey basis. The building has state-of-the-art installations including an advanced Building Management System and sophisticated security systems that fit a Headquarters Building.

PROJECT INFORMATION

Name of Project	Byblos Bank Tower	
Location	Ashrafieh - Lebanon	
Name of Client	Byblos Bank s.a.l.	
Address	Ashrafieh - Lebanon	
Contact Number	Tel: 961 1 335 200	Fax: 961 1 339 474
Name of Architect / Consultant	Samir Khairallah & Partners	
Address	Hazmieh - Lebanon	
Contact Number	Tel: 961 5 452 793	Fax: 961 5 451 899
Type of Project	Office Building	
Type of Works	<div>- Reinforced concrete</div> <div>- Mechanical works</div> <div>- HVAC</div> <div>- Electrical works</div> <div>- Special Finishing</div> <div>- Façade works</div> <div>- Earthworks, landscaping</div> <div>- Furnishing</div>	

Description of Project	<p>A high-rise tower on lot 350 of the District of Ashrafieh in Beirut serving as Head Office of Byblos Bank, one of the leading banks in Lebanon.</p> <p>The Tower consists of six underground parking floors that could accommodate 250 cars, a lower ground floor, a ground floor and eighteen typical floors. The Tower was built according to International Construction standards and Safety standards. The Tower is managed through a Building Management System (BMS) that enables its occupants the control of the fire detection system, the closed circuit TV, the intrusion control on peripheral access, the access control through intelligent cards used for parking facilities, main hall and peripheral entrances, restaurant bill identification, interphones, TV antennas, satellite dish, music central distributions and the ventilation system.</p>
------------------------	---

Scope of Work	La Constructa has undertaken, as the main contractor, the execution of all concrete works, finishing works, electro-mechanical works and landscaping works.
---------------	---

Total Built-up Area	18,600 m²
Value	USD 51,405,000
Project Start Date	August 1996
Project Completion Date	June 1999

AN EYE
ON THE PROJECT



BYBLOS BANK
BRANCHES

PROJECT DESCRIPTION

Byblos Bank Branches – Since 1993, La Constructa has built over 70 Byblos Bank branches all over Lebanon, Syria and Sudan and is continuously working on several simultaneous new branches.

PROJECT INFORMATION

Name of Project	Byblos Bank Branches	
Location	Lebanon, Syria and Sudan	
Name of Client	Byblos Bank s.a.l.	
Address	Ashrafieh - Lebanon	
Contact Number	Tel: 961 1 335 200	Fax: 961 1 339 474
Name of Architect / Consultant	Ralph Madcour & Associates	
Address	Antelias - Lebanon	
Contact Number	Tel: 961 4 522 442	Fax: 961 4 522 439
Type of Project	Office Building	
Type of Works	<div>- Reinforced concrete</div> <div>- Mechanical works</div> <div>- HVAC</div> <div>- Electrical works</div> <div>- Special Finishing</div> <div>- Façade works</div> <div>- Earthworks, landscaping</div> <div>- Furnishing</div>	
Description of Project	Byblos Bank s.a.l. is expanding its branches all over Lebanon, Syria and Sudan, and has given out the contracting work to La Constructa s.a.l. since 1993. The branches are designed and built up according to International and Safety Standards.	
Scope of Work	La Constructa is undertaking the execution of different Byblos Bank branches acting as general contractor with turn key cost-plus fees.	
Total Built-up Area	25,815m² – Since 2001	
Value	USD 76,424,400 – Since 2001	
Project Start Date	January 2001	
Project Completion Date	Continuous	

AN EYE
ON THE PROJECT



BYBLOS BANK
REGIONAL HEADQUARTERS

PROJECT DESCRIPTION

Byblos Bank Regional Headquarters – This building houses a Bank's Disaster Recovery Center, a self supporting unit that can withstand disasters including severe seismic shocks and remain operational for a period of time protecting the Bank's data until such a time when it can be retrieved. It also houses underground archiving facilities as well as offices and other commercial areas.

PROJECT INFORMATION

Name of Project	Byblos Bank Regional Headquarters	
Location	Jbeil - Lebanon	
Name of Client	Byblos Bank s.a.l.	
Address	Ashrafieh - Lebanon	
Contact Number	Tel: 961 1 335 200	Fax: 961 1 339 474
Name of Architect / Consultant	Samir Khairallah & Partners	
Address	Hazmieh - Lebanon	
Contact Number	Tel: 961 5 452 793	Fax: 961 5 451 899
Type of Project	Office Building	
Type of Works	<div>- Reinforced concrete</div> <div>- Mechanical works</div> <div>- HVAC</div> <div>- Electrical works</div> <div>- Special Finishing</div> <div>- Façade works</div> <div>- Earthworks, landscaping</div>	
Description of Project	An office building including four basements consisting of parking, archives and technical rooms, one lower ground floor, one upper ground floor and two upper structures of four stories serving as offices and two stories serving as library.	
Scope of Work	La Constructa has undertaken, as the main contractor, the construction of the building including all finishing, electro-mechanical and landscaping works.	
Total Built-up Area	16,000 m²	
Value	USD 16,508,817	
Project Start Date	June 2003	
Project Completion Date	November 2007	

AN EYE
ON THE PROJECT



EMBASSY & CONSULATE OF KUWAIT

PROJECT DESCRIPTION

Embassy & Consulate of Kuwait – This building houses the embassy and consulate of Kuwait in Lebanon. The project is still on-going.

PROJECT INFORMATION

Name of Project	Embassy and Consulate of Kuwait	
Location	Beirut - Lebanon	
Name of Client	Kuwait Government - Ministry of Foreign Affairs	
Address	Kuwait - Kuwait / Beirut - Lebanon	
Contact Number	Tel: 961 1 822 516	Fax: 961 1 842 220
Name of Architect / Consultant	A-Consult / Dolly Braidi Debs	
Address	Kaslik- Lebanon	
Contact Number	Tel: 961 9 640 010	Fax: 961 9 640 884
Type of Project	Office Building	
Type of Works	<div>- Reinforced concrete</div> <div>- Structural steel works</div> <div>- Mechanical works</div> <div>- HVAC</div> <div>- Electrical works</div> <div>- Special Finishing</div> <div>- Façade works</div> <div>- Earthworks, landscaping</div>	
Description of Project	The project encompasses the rehabilitation of the existing embassy building, the construction of a new consulate building and the introduction of a steel pathway bridge connecting them together.	
Scope of Work	La Constructa has undertaken, as the main contractor, the demolition and renovation works of the existing building as well as the construction of the new building, including all architectural finishes, electro-mechanical and landscaping works.	
Total Built-up Area	5,400 m²	
Value	USD 3,716,355	
Project Start Date	February 2006	
Project Completion Date	June 2008	

AN EYE ON THE PROJECT



FRENCH EMBASSY

PROJECT DESCRIPTION

French Embassy – This project earned its designer, Yves Lion, the Prix de l'Equerre d'Argent, one of the most prestigious architectural awards in France. La Constructa translated Lion's ideas into concrete in a superb fashion completing the Embassy Compound including all its sophisticated and advanced installations in record time.

PROJECT INFORMATION

Name of Project	French Embassy	
Location	Sodeco - Lebanon	
Name of Client	French Government - Ministry of Foreign Affairs	
Address	Sodeco - Lebanon	
Contact Number	Tel: 961 1 420 000	Fax: 961 1 420 038
Name of Architect / Consultant	Yves Lion	
Address	Paris - France	
Contact Number	Tel: 33 1 45432 742	Fax: 33 1 45438 241
Type of Project	Office Building	
Type of Works	<div>- Reinforced & Precast concrete</div> <div>- Structural steel works</div> <div>- Mechanical works</div> <div>- HVAC</div> <div>- Electrical works</div> <div>- Special Finishing</div> <div>- Façade works</div> <div>- Earthworks, landscaping</div>	
Description of Project	A diplomatic office building consisting of one basement serving as technical floor, a ground floor and four upper floors.	
Scope of Work	La Constructa has undertaken, as the main contractor, the construction of the building including all finishing, electro-mechanical and landscaping works.	
Total Built-up Area	4,500 m²	
Project Start Date	January 2001	
Project Completion Date	August 2002	

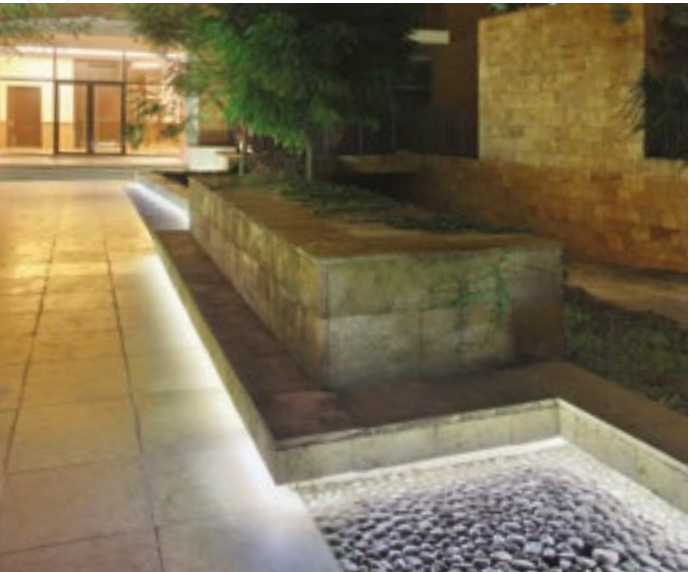
AN EYE ON THE PROJECT



CONVIVUM
BUILDINGS PROJECT

PROJECT DESCRIPTION		
Convivium Buildings Project – These buildings offer high quality standards combining traditional features such as high ceilings, respect to the culture of the areas they are built in as well as to the environment, with state-of-the-art installations to ensure comfort to the end users.		
PROJECT INFORMATION		
Name of Project	Convivium Buildings (I, II, III, V and VI)	
Location	Gemmayze - Lebanon	
Name of Client	B.R.E.I. s.a.l.	
Address	Gemmayze - Lebanon	
Contact Number	Tel: 961 1 560 611	Fax: 961 1 560 664
Name of Architect / Consultant	- Bernard Khoury Architects - Maurice Bonfils Architect - Dagher Architects - Ra'ik El-Khoury & Partners - Jean-Marie Tawtal	
Type of Project	Residential Complex	
Type of Works	- Reinforced & Precast concrete - Electrical works - Structural steel works - Special Finishing - Mechanical works - Façade works - HVAC - Earthworks, landscaping	
Description of Project	Residential complexes and Boutique hotel with courtyards, gardens and alleys reflecting different periods of the traditional architecture existing in the surrounding area of Gouraud Street.	
Scope of Work	La Constructa has undertaken, as the main contractor, the construction of the whole project including the integration of all the changes requested by the owners and their decorators.	
Total Built-up Area	68,550 m ²	
Value	USD 121,431,819	
Project Start Date	May 1999	
Expected Project Completion Date	Completed	

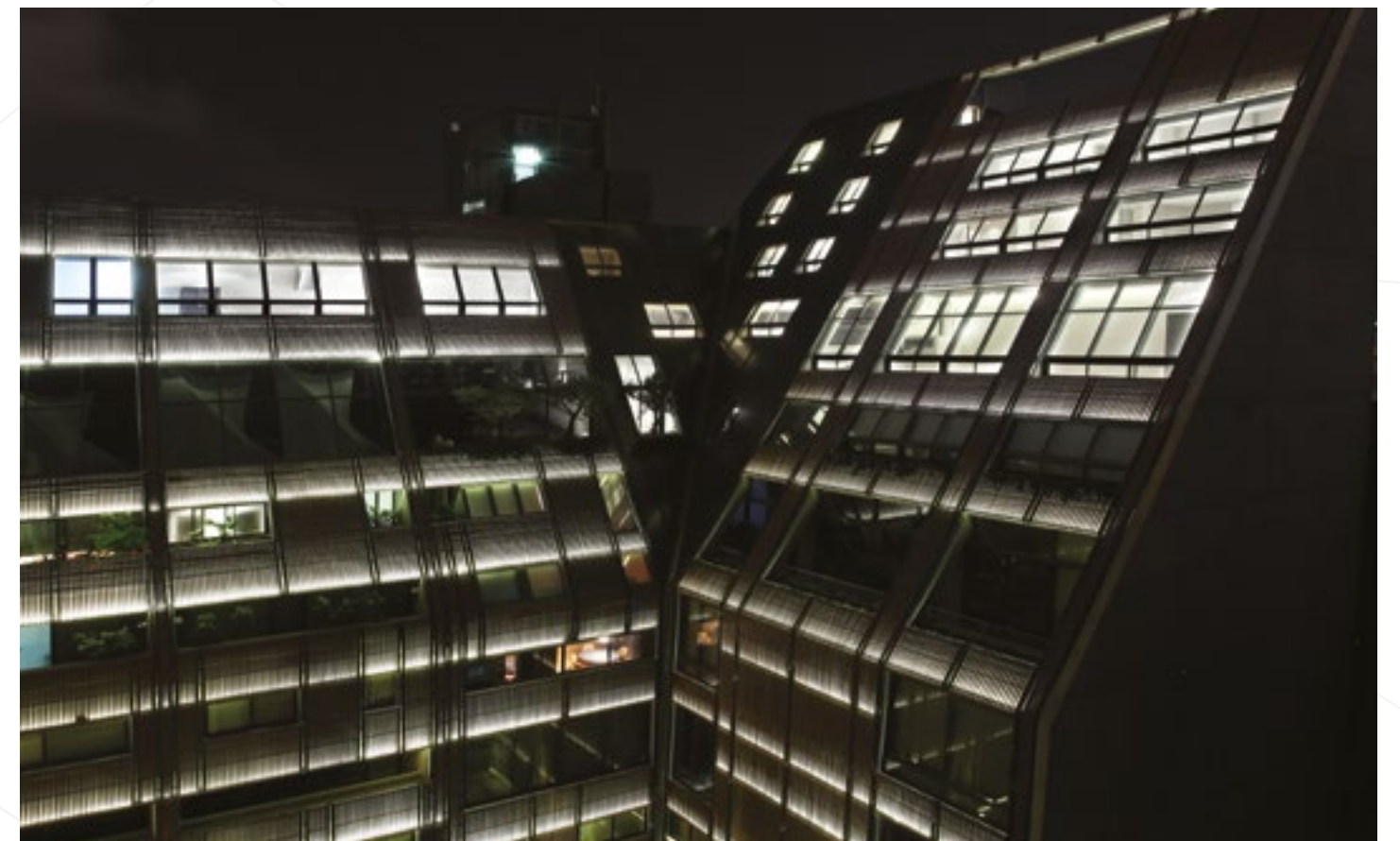
AN EYE
ON THE PROJECT



AN EYE
ON THE PROJECT



AN EYE
ON THE PROJECT



BYBLOS BANK
AFRICA HEADQUARTERS, KHARTOUM, SUDAN

PROJECT DESCRIPTION

Byblos Bank Africa Headquarters, Khartoum, Sudan – This twelve storey office building will include the headquarters of Byblos Bank Africa in Khartoum, a branch for the Bank, along with other office spaces and utility services.

PROJECT INFORMATION

Name of Project	Byblos Bank Africa Headquarters	
Location	Khartoum - Sudan	
Name of Client	Byblos Bank s.a.l.	
Address	Khartoum - Sudan	
Contact Number	Tel: 961 1 335 200	Fax: 961 1 339 474
Name of Architect / Consultant	A-Consult / Dolly Braid Debs	
Address	Kaslik- Lebanon	
Contact Number	Tel: 961 9 640 010	Fax: 961 9 640 884
Type of Project	Office Building	
Type of Works	<div>- Complete Design</div> <div>- Reinforced concrete</div> <div>- Mechanical works & HVAC</div> <div>- Electrical works</div> <div>- Special Finishing</div> <div>- Façade works</div> <div>- Furnishing</div> <div>- Earthworks, landscaping</div>	
Description of Project	An office building including one basement consisting of safe rooms, storage and technical rooms, one ground floor for Bank Branch and Lobby, four upper floors for parking, seven upper office space floors and one last floor for multipurpose & reception area plus two apartments.	
Scope of Work	La Constructa has undertaken this project on Design-Build basis to manage the design and construction for all disciplines including excavation, shoring, structural works, finishing, electro-mechanical and communication and security systems.	
Total Built-up Area	13,000 m²	
Value	USD 30,000,000	
Project Start Date	March 2007	
Expected Project Completion Date	December 2009	

AN EYE
ON THE PROJECT



ARAPPCO
HEADQUARTERS, KHARTOUM, SUDAN

PROJECT DESCRIPTION

ARAPPCO Headquarters, Khartoum, Sudan – This five storey office building will include the headquarters of ARAPPCO in Khartoum, along with other office spaces and utility services.

PROJECT INFORMATION

Name of Project	ARAPPCO Headquarters	
Location	Khartoum - Sudan	
Name of Client	Arab Poultry Production & Processing Co. Ltd.	
Address	Khartoum - Sudan	
Contact Number	Tel: 249 18383673113	Fax: 249 18383628444
Name of Architect / Consultant	Al Takamul Al Handasi	
Address	Dubai - UAE	
Contact Number	Tel: 971 4 287 287	Fax: 971 4 273 209
Type of Project	Office Building	
Type of Works	<div>- Reinforced concrete</div> <div>- Mechanical works</div> <div>- HVAC</div> <div>- Electrical works</div> <div>- Special Finishing</div> <div>- Façade works</div> <div>- Earthworks, landscaping</div>	
Description of Project	A purpose-built office block composed of two inner-twined sections overlooking a central atrium including a basement, a ground floor and five office floors, capped with air-conditioning services at the roof level. The façades consist of a double glazed curtain walls and composite aluminum panel cladding. The building is managed through a Building Management System (BMS) enabling round-the-clock property management for the fire protection system, the air conditioning and mechanical ventilators system, the electrical installation system, the building security system and the telecommunication facilities.	
Scope of Work	La Constructa has undertaken, as the main contractor, the construction of the building including all excavation, soil replacement, structural, finishing, electro-mechanical and landscaping works.	
Total Built-up Area	7,250 m ²	
Value	USD 13,567,125	
Project Start Date	September 2008	
Expected Project Completion Date	November 2011	

AN EYE
ON THE PROJECT



BYBLOS BANK
AFRICA, BAHRI BRANCH, SUDAN

PROJECT DESCRIPTION	
Byblos Bank Africa, Bahri Branch, Sudan This building will include the Branch of Byblos Bank Africa in Bahri, along with other office spaces and all utility services.	
PROJECT INFORMATION	
Name of Project	Byblos Bank Africa Bahri Branch
Location	Bahri - Sudan
Name of Client	Byblos Bank s.a.l.
Address	Bahri - Sudan
Contact Number	Tel: 961 1 335 200 Fax: 961 1 339 474
Name of Architect / Consultant	Cabinet d'Architectes Madkour
Address	Antelias - Lebanon
Contact Number	Tel: 961 4 522 442 Fax: 961 4 522 439
Type of Project	Office Building
Type of Works	<div>- Complete Design</div> <div>- Reinforced concrete</div> <div>- Mechanical works & HVAC</div> <div>- Electrical works</div> <div>- Special Finishing</div> <div>- Façade works</div> <div>- Furnishing</div> <div>- Earthworks, landscaping</div>
Description of Project	An office building including one basement consisting of safe rooms, storage and technical rooms, one ground floor for Bank Branch, one floor office.
Scope of Work	La Constructa has undertaken this project on Design-Build basis to manage the design and construction for all disciplines including excavation, shoring, structural works, finishing, electro-mechanical and communication and security systems.
Total Built-up Area	2,000 m ²
Value	USD 5,077,349
Project Start Date	April 2007
Expected Project Completion Date	May 2009

AN EYE
ON THE PROJECT



CELLIS
HEADQUARTERS

PROJECT DESCRIPTION

Cellis Headquarters – La Constructa completed the internal finishing of this twelve-story building in a record time of four months.

PROJECT INFORMATION

Name of Project	Cellis Headquarters	
Location	Furn El Chebbak - Lebanon	
Name of Client	Cellis - FTML	
Address	Furn El Chebbak - Lebanon	
Contact Number	Tel: 961 3 391 000	Fax: 961 3 391 859
Name of Architect / Consultant	Didier Drummond	
Address	Paris - France	
Contact Number	Tel: 331 48069 300	Fax: 331 48069 301
Type of Project	Office Building	
Type of Works	<div>- Reinforced concrete - Electrical works</div> <div>- Mechanical works - Special Finishing</div> <div>- HVAC - Façade works</div>	
Description of Project	A commercial building consisting of twelve stories; four basements serving as parking and technical area and eight typical floors serving as multi-purpose offices.	
Scope of Work	La Constructa has undertaken, as the main contractor, the execution of all finishing works such as partitioning walls, false ceiling, painting, and carpeting, in addition to all electro-mechanical works.	
Total Built-up Area	6,500 m²	
Value	USD 5,549,792	
Project Start Date	November 2000	
Project Completion Date	March 2001	

AN EYE
ON THE PROJECT



UNIVERSITY
OF BALAMAND

PROJECT DESCRIPTION		
University of Balamand – La Constructa built the Balamand University's Administration Building as well as its Clock Tower.		
PROJECT INFORMATION		
Name of Project	University of Balamand – Administration Building	
Location	Balamand - Lebanon	
Name of Client	University of Balamand	
Address	Balamand - Lebanon	
Contact Number	Tel: 961 6 930 250	Fax: 961 6 930 240
Name of Architect / Consultant	Samir Khairallah & Partners	
Address	Hazmieh - Lebanon	
Contact Number	Tel: 961 5 452 793	Fax: 961 5 451 899
Type of Project	Office Building	
Type of Works	<div>- Reinforced & Precast concrete</div> <div>- Mechanical works</div> <div>- HVAC</div> <div>- Electrical works</div> <div>- Special Finishing</div> <div>- Façade works</div> <div>- Earthworks, landscaping</div>	
Description of Project	An administration building composed of one basement consisting of technical rooms, one ground floor including main lobby, offices and Ignatius hall, three upper office floors in addition to a clock tower as well as hard and soft landscaping.	
Scope of Work	La Constructa has undertaken, as the main contractor, the construction of the building including all concrete works, earthworks, finishing, electro-mechanical and landscaping works.	
Total Built-up Area	4,300 m²	
Value	USD 4,770,370	
Project Start Date	December 2001	
Project Completion Date	December 2003	

AN EYE
ON THE PROJECT



FARAYA
1950

PROJECT DESCRIPTION	
Faraya 1950 – A prestigious residential compound composed of 19 luxurious villas with private gardens and state-of-the-art installations and facilities located on the commanding mountaintops of Ouyoun El Siman. The project is under progress.	
PROJECT INFORMATION	
Name of Project	Faraya 1950
Location	Ouyoun El Siman - Lebanon
Name of Client	Oxygen Development s.a.l.
Address	Koraytem - Lebanon
Contact Number	Tel: 961 1 790 658 Fax: 961 1 795 177
Name of Architect / Consultant	BINA s.a.l.
Address	Koraytem - Lebanon
Contact Number	Tel: 961 1 790 658 Fax: 961 1 795 177
Type of Project	Residential Complex
Type of Works	<div><div>- Reinforced concrete</div><div>- Reinf. concrete retaining walls</div><div>- Gravity retaining walls</div><div>- Mechanical works</div><div>- HVAC</div></div> <div><div>- Electrical works</div><div>- Special Finishing</div><div>- Façade works</div><div>- Earthworks, landscaping</div></div>
Description of Project	A prestigious residential compound composed of 19 luxurious villas with private gardens and state of the art installations and facilities located on a commanding mountaintop.
Scope of Work	La Constructa has undertaken, as prime contractor, the execution of the project including the coordination with the relevant designers and the management of all involved subcontractors' disciplines.
Total Built-up Area	5,000 m²
Value	USD 4,500,000
Project Start Date	August 2005
Project Completion Date	December 2007

AN EYE
ON THE PROJECT



EUROPEAN COMMISSION
DELEGATION BUILDING

PROJECT DESCRIPTION

European Commission Delegation Building
Highly experienced in all kinds of refurbishing and rehabilitation works, La Constructa has brought back the charm of the traditional architecture of this building.

PROJECT INFORMATION

Name of Project	European Commission Delegation Building	
Location	Damascus - Syria	
Name of Client	European Commission Delegation	
Address	Damascus - Syria	
Contact Number	Tel: 963 11 3340 111	Fax: 963 11 3311 166
Name of Architect / Consultant	Tradeco	
Address	Damascus - Syria	
Contact Number	Tel: 963 11 2223 012	Fax: 963 11 2217 675
Type of Project	Office Building	
Type of Works	- Reinforced concrete - Mechanical works - HVAC	- Electrical works - Façade works - Earthworks, landscaping
Description of Project	An existing building composed of one basement, three floors and a roof, originally designed and built as apartments transformed into office premises with modern central facilities for the European Delegation.	
Scope of Work	La Constructa has performed a Construction Management mission, assisting the building's owner in the following areas: planning and progress control, quality control and shop drawings coordination, coordination with European Delegation's security officers.	
Total Built-up Area	1,400 m²	
Value	Construction Management Fees	
Project Start Date	January 2004	
Project Completion Date	July 2004	

AN EYE
ON THE PROJECT



KUWAITI DIPLOMATS RESIDENCE

PROJECT DESCRIPTION

Kuwaiti Diplomats Residence – A residential complex composed of 4 buildings including all external works for the Kuwaiti Diplomats in Yaafour – Syria.

PROJECT INFORMATION

Name of Project	Kuwaiti Diplomats Residence	
Location	Yaafour - Syria	
Name of Client	Projacs Syria for Government of Kuwait	
Address	Syria	
Contact Number	Tel: 965 97223 755	
Name of Architect / Consultant	Kahale Archicenter	
Address	Syria	
Type of Project	Residential Project	
Type of Works	<div>- Earthworks</div> <div>- Reinf. concrete</div> <div>- Decoration works</div> <div>- Mechanical works</div> <div>- Electrical works</div> <div>- Special Finishing</div> <div>- Facades Works</div> <div>- Fence & landscaping</div>	
Description of Project	A residential complex composed of 4 adjacent buildings. All infrastructure and facilities were provided with roads and landscaping works.	
Scope of Work	La Constructa has undertaken, as prime contractor, the execution of the project including the coordination with the relevant designers and the management of all involved subcontractors' disciplines.	
Total Built-up Area	13,500 m²	
Value	USD 2,543,278	
Project Start Date	Apr 2009	
Project Completion Date	Nov 2010	

AN EYE ON THE PROJECT



SAINT-CHARLES
HOSPITAL (PHASE 1: PARKING)

PROJECT DESCRIPTION		
Saint-Charles Hospital (Phase 1: Parking) – The first phase of the project encompasses the construction of a new parking facility for the Saint-Charles Hospital on Build-Operate-Transfer basis. Construction of a new 6-floor polyclinic building with renovation of existing floors is planned in a second phase, to be awarded to La Constructa in 2008.		
PROJECT INFORMATION		
Name of Project	Saint-Charles Hospital – Phase 1: Parking	
Location	Fayadieh - Lebanon	
Name of Client	Congregation des Soeurs des Saints-Coeurs	
Address	Fayadieh, Lebanon	
Contact Number	Tel: 961 1 200 635	Fax: 961 1 201 086
Name of Architect / Consultant	Ralph Madcour & Associates	
Address	Antelias - Lebanon	
Contact Number	Tel: 961 4 522 442	Fax: 961 4 522 439
Type of Project	Parking	
Type of Works	- Reinforced concrete - Mechanical works - HVAC - Electrical works	
Description of Project	The project consists of 3 underground parking floors that could accommodate 230 cars.	
Scope of Work	La Constructa has undertaken, as the main contractor, the execution of all concrete and electro-mechanical works. La Constructa is currently operating this facility for a period of 15 years before transferring it to the Owner.	
Total Built-up Area	6,900 m²	
Project Start Date	June 2000	
Project Completion Date	August 2001	

AN EYE
ON THE PROJECT



SECTION 5

THE QUALITY DIFFERENCE

1. THE QUALITY DIFFERENCE

Dedication to quality can make all the difference and La Constructa cares about maintaining high standards at all times.

This is why the firm has an effective Quality Management System (QMS) which guarantees work and end products conform to specified requirements.

With La Constructa, you always get outstanding quality.

La Constructa was the first General Contracting and Construction Management company in Lebanon to be awarded with the ISO 9001:2008 certification for quality and excellence in the field. And this commitment to quality is still very much alive to this day. The ISO certification is an international stamp of recognition and reflects La Constructa's commitment to delivering exceptional services to clients and the highest quality standards in construction.

La Constructa ensures professional quality control at all times because its site staff always thoroughly knows the specifications and requirements of the project in question; continuous on-site inspections take place; and Quality Control forms for each type of work are used.

In addition to this, La Constructa continually monitors and improves its QMS via regular internal quality audits and external quality audits performed by **Bureau Veritas Certification** (in-line with the latest ISO 9001:2008 Standard). This means that the firm evolves, adapts and reacts to uphold quality. La Constructa's quality assurance procedures are also in place to ensure client satisfaction by making sure everything conforms to the specifications and installation drawings.

Testaments to La Constructa's commitment to quality:

- ISO 9001:2008 Certificate
- Quality Policy

ISO 9001:2008
CERTIFICATE

	
Certification Awarded to	
LA CONSTRUCTA	
- LEBANON: 4 th Floor, Banking Center, Dora – Beirut	
- SUDAN: GF, Office #05, Bourj Al Nakhil, Str. 45 El Aamarat – Khartoum	
- SYRIA: Lot 1288/25, 17 Palestine Str., Al Baramka - Damascus	
Bureau Veritas Certification certify that the Management System of the above organisation has been audited and found to be in accordance with the requirements of the management system standards detailed below	
Standards	
ISO 9001:2008	
Scope of Certification	
- GENERAL CONTRACTING (CIVIL AND ELECTRO-MECHANICAL WORKS)	
- PROJECT MANAGEMENT	
- CONSTRUCTION MANAGEMENT	
Extension Limited to Design & Development Clause 7.3	
Original Approval Date:	10 th AUGUST 1998
Subject to the continued satisfactory operation of the organisation's Management System, this certificate is valid until:	15 th DECEMBER 2013
To check this certificate validity please call (+961 1 240 640)	
Further clarifications regarding the scope of this certificate and the applicability of the management system requirements may be obtained by consulting the organisation	
Date:	31 st DECEMBER 2010
Certificate Number:	IND10.7739
Managing office: Bureau Veritas Liban SAL, Dedeyan Center, 9 th Floor, Dora, Lebanon,	Joseph Chatta Bureau Veritas Chief Executive for Lebanon
CERTIFICATION AUTHORITY: Bureau Veritas Certification (India) Private Limited, Marwah Center, 6 th Floor Off Saki – Vihar Road, Andheri (E) Mumbai – 400 072, India	BUREAU VERITAS CERTIFICATION (India) P.L. using the accreditation certificate number 900
Issuing office: Bureau Veritas Liban SAL	 008

QUALITY POLICY



QUALITY POLICY

We are committed to attaining the highest degree of *Client Satisfaction!*

We strive to achieve market leadership by exceeding our local and international Clients' expectations and outperforming our competitors in *Quality, Time, Cost and Safety.*

Primary Strategies to Accomplish Our Policy

- Ensure quality objectives are established at all levels of the organization and accomplished through the sound implementation of a Quality Management System that complies with ISO 9001:2008 requirements, with a commitment to continual improvement.
- Promote a "quality-in-all-we-do" philosophy among employees and provide them with the resources and training necessary for delivering projects on time and within budget, in a safe and environmentally conscious atmosphere.
- Develop communication channels with stakeholders based on transparency and integrity.
- Establish and maintain a constructive information network that allows all personnel to voice their views in terms of service and product innovation, workplace improvement and problem solving.

Quality is not just another goal; it is our basic strategy for success and future growth

General Manager



2. A SAFE APPROACH TO WORK, A REAL CONCERN FOR THE ENV IRONMENT

La Constructa builds lifestyles and is in synch with the times. This is why the firm is genuinely concerned about the environment, health and safety. It's the direct result of an avid interest in the well-being of its staff and the communities and surroundings it works in (i.e. the drive to improve lives).

The firm actively strives to reduce its impact on nature and takes measures to ensure the work setting is safe and the noise pollution level is low. To this end, a comprehensive Health, Safety & Environmental Policy is in place. This policy evolves with new challenges, novel equipment and transforming demands.

Building the foundations of a greener, safer world:

- Health, Safety & Environmental Policy

HEALTH, SAFETY & ENVIRONMENTAL POLICY



HEALTH, SAFETY & ENVIRONMENTAL POLICY

La Constructa believes that Health, Safety and Environment (HS&E) are an integral part of the Company's performance and a prime responsibility of management at all levels. La Constructa is thus committed to enhancing its leadership role in the construction field by establishing and maintaining a safe and healthful work environment, minimizing its imprint on site ecology and otherwise running operations in a manner that is protective of human health and environment, while delivering to the Client the highest quality product.

Through this commitment, which is extended to all its projects, La Constructa aims to:

- Conduct its business in a way that protects the safety and health of its workforce, its Clients and the community by providing and maintaining a workplace and systems of work that are free of injury and harm.
- Maintain a clean and healthy environment by seeking, first to optimize the use of natural resources, reduce emissions and releases, and avoid the creation of pollution and unnecessary waste from our projects and operations by selecting appropriate building materials, and second to manage the remaining waste through safe and responsible methods.
- Create a culture that embraces continual improvement in HS&E performance through research, development and adoption of new technologies preventing work related ill health and incidents and reducing environmental emissions, waste and use of energy.
- Build and expand its expertise by ensuring that all employees are provided with information, instruction, training and supervision appropriate to the scope of work being undertaken.
- Meet and exceed legal and statutory requirements as well as community expectations.

Employees are required to take all reasonable care to ensure their own safety and that of others who may be affected by their acts or omissions. They are also required to comply with all instructions and directions established to provide a safe and healthy workplace and maintain sound environmental practices at all times.

The same standards of compliance are also required from all subcontractors and partners.

This policy shall be promoted throughout the Company to ensure all employees understand their HS&E accountabilities and demonstrate visible HS&E leadership. It shall be continuously reviewed and all deficiencies shall be systematically addressed in order to deliver opportunities for improvement and achieve excellence and best practice.

General Manager



SECTION 6

REFERENCE LETTERS

A -
CONSULT



C	05R121	LC	RN	L	121-169
---	--------	----	----	---	---------

June 6, 2012

La Constructa Reference Letter

To Whom It May Concern

We would like to take this opportunity to commend La Constructa and offer our professional recommendation of their firm. We have coordinated with La Constructa on several projects in our capacity as either Client Representative or Architect and it is worthy to note that not only did La Constructa finish these projects in a highly professional manner but they were also resourceful and maintained excellent lines of communication with all parties involved.

Some of the projects we have executed with La Constructa were unique in their design and required attention to detail. La Constructa delivered on these aspects and they also readily complied with the various changes requested by the Client.

We were satisfied with La Constructa's services and are looking forward for future collaboration with this firm.

Sincerely,


Dolly Debs Braid
Director

DEBS CENTER - KASLIK, LEBANON. Tel: +961 (9) 640883, 640010, 640012.
Fax: +961 (9) 640884. E-mail: info@aconsultononline.com. Web:
www.aconsultononline.com

UNIVERSITY
OF BALAMAND

UNIVERSITY OF BALAMAND

Office of Buildings and Grounds



جامعة البلمند

مكتب المباني والأراضي

**UNIVERSITY OF BALAMAND
ADMINISTRATION BUILDING**

CERTIFICATE OF COMPLETION

In execution of the Contract Agreement signed the 10th day of December 2001, between the Employer University of Balamand and La Constructa s.a.l., and after the expiry of the Defects Liability Period, and pursuant to the provisions of Clause 62.1 "Defects Liability Certificate", The Employer hereby confirms that, as of 01/12/2004, the Contractor have completed his obligations to execute and complete the Works and remedy any defects therein in accordance with the contract documents and to the Employer's and Engineer's satisfaction.

University of Balamand
Employer

by Mr. Philip Hawi
Authorized Representative Signature

4.2.2006
Date

ص.ب. ١٠٠ طرابلس - لبنان أو ص.ب. ٣٣ أميoun، الكورة - لبنان

هاتف: +٩٦١ ٦٩٣٠٢٥٠ فاكس: +٩٦١ ٦٩٣٠٢٤٠ خطوي: +٩٦١ ٣ ٣٣٨٦٧٩ / ٣٣٥٦٨٣

P.O.Box: 100 Tripoli - Lebanon or P.O.Box: 33 Amioun - al Kurah - Lebanon

Tel: +961 6 930250 Mobile: +961 3 338679 / 335683 Fax: +961 6 930240 e-mail: obg@balamand.edu.lb

UNIVERSITY
OF BALAMAND

UNIVERSITY OF BALAMAND

Office of Buildings and Grounds



جامعة البلمند

مكتب المباني والأراضي

To whom it may concern,

The University of Balamand certifies that La Constructa s.a.l. General Contracting was selected to conduct the construction of the University of Balamand Administration Building in Balamand, Lebanon.

La Constructa successfully completed the project on December the 1st 2003, within the targeted time and budget. Throughout the construction and maintenance periods of the project, La Constructa showed full dedication to deliver quality products and to completely honor its contractual and professional commitments.

La Constructa displayed high adaptability and a constructive co-operational spirit which have been of value to the University.

The University of Balamand wishes, therefore, to recommend La Constructa to the highest regard in any future projects.

Yours Sincerely,


4.9.2006



ص.ب. ١٠٠ طرابلس - لبنان أو ص.ب. ٣٣ أميون - الكورة - لبنان
هاتف: +٩٦١ ٦ ٩٣٠٢٥٠ فاكس: +٩٦١ ٦ ٩٣٠٢٤٠
P.O.Box: 100 Tripoli - Lebanon or P.O.Box: 33 Amioun - al Kurah - Lebanon
Tel: +961 6 930250 Mobile: +961 3 338679 / 335683 Fax: +961 6 930240 e-mail: obg@balamand.edu.lb

BYBLOS BANK BRANCHES



July 18th, 2012

To Whom It May Concern

La Constructa s.a.l. General Contracting is being awarded for over sixteen years now the construction of all Byblos Bank Branches throughout the Lebanese territories.

After having successfully completed more than sixty branches with a total built up area exceeding 21,000 m², La Constructa constantly displayed high level of professionalism and commitment to quality. Their ability to quickly adapt to requested changes as well as their continuous cooperative attitude proved to be essential for us to achieve our challenging expansion strategy. Byblos Bank highly values the contribution of La Constructa in building its public image.

Byblos Bank does not hesitate to recommend **La Constructa s.a.l.** as a professional and motivated company, meeting international norms and standards.

Sincerely,

A blue ink signature is written over a rectangular blue stamp that contains the Byblos Bank SAL logo and name.

Byblos Bank SAL

**BYBLOS BANK
TOWER**



Beirut January 13, 2007

To whom it may concern

This is to certify that La Constructa s.a.l. General Contracting has accomplished the construction of Byblos Bank Tower in Achrafieh, Lebanon, as turnkey main contractor. This high-rise 26 story prominent state-of-the-art Headquarters Building elegantly materializes both the image and future vision of Byblos Bank.

The successful completion of this challenging project was due, in large part, to the continuous efforts exerted by La Constructa's organization in their expeditious handling of construction problems, their attention to detail combined to their commitment to maintain quality work, their positive and communicative attitude, as well as their dedication to safely deliver the works within the targeted budget.

Byblos Bank would confidently recommend La Constructa and will continue relying on its services to accomplish more ambitious endeavors in the future.

Sincerely,

A handwritten signature in black ink, appearing to read "Alain Wanna", written over a faint rectangular stamp.

**Alain Wanna
Assistant General Manager
Head of Finance & Administration Division.**

**BYBLOS BANK
TOWER**

LA CONSTRUCTA S.A.L.

***BYBLOS BANK HEADQUARTERS TOWER
ACHARFIEH - LEBANON***

TAKING-OVER CERTIFICATE

In execution of the Contract Agreement signed in August 1996, between the Employer Byblos Bank s.a.l. and La Constructa s.a.l., and pursuant to the provisions of the Contract Conditions, and after inspection of the works by the Engineer in the presence of the Employer and the Contractor, the works performed are hereby declared to have been substantially completed as of the end of June 1999, in accordance with the contract documents and to the satisfaction of the Engineer and Employer.

Byblos Bank s.a.l.	by Alain Wanna	
Employer	Authorized Representative Signature	Date




Engineer O (A.M.)
 C (Contr. M. Proj. M. P. E.)

CANADIAN
EMBASSY



Government of Canada
Embassy of Canada

Gouvernement du Canada
Ambassade du Canada

*Canadian Embassy / Ambassade du Canada
Jal el Dib Highway
Coolrite Bldg.*

UNCLASSIFIED

To whom it may concern,

The Canadian Embassy in Beirut is pleased to provide this letter of reference for the construction company "La Constructa". This company was chosen over several other companies to conduct the expansion project of the Canadian Chancery in Beirut.

"La Constructa" started the renovation project on 22/09/2004 and successfully completed the works July 2005. Throughout the delivery of the project "La Constructa" has proven to be fully dedicated to complete each phase within the time constraints and deadlines.

They have been flexible in quickly adapting to various changes as they arose on the construction site, yet successfully achieving high quality results. Their planning process and problem solving abilities have been invaluable to the Embassy.

"La Constructa" has an excellent and professional ISO certified team. Their adaptability in working hours lessened the burden on the operational hours of the Embassy.

The Canadian Embassy in Beirut recommends "La Constructa" to the highest regard in any future endeavour.

Yours sincerely,

Bernard P. Terrence, B. Arch. O.A.A. & M.R.A.I.C.
Project Manager, SRPA
Project Implementation Division
Physical Resources Bureau, ISO 9001:2000
Dept of Foreign Affairs Canada T: 613-946-1536 F: 613-957-4301
E: bernard.terrence@international.gc.ca

Canada

FRENCH
EMBASSY



MINISTÈRE DES AFFAIRES ÉTRANGÈRES

Ambassade de France au Liban

Antenne Régionale du Service de l'Équipement

Affaire suivie par:
Référence:

Beyrouth, le 26/03/2002

ATTESTATION

L'Ambassade de France au Liban certifie que la société La Constructa s.a.l, a réalisé les travaux des lots :

Groupes de Lots 01 : Gros œuvre et seconds œuvres civiles

Groupes de lots 02 : Installations Électriques

Groupes de lots 03 : Installations de plomberie sanitaire et de climatisation

Groupes de lots 04 : Aménagements Extérieurs

Relatifs à la construction de la nouvelle Chancellerie Diplomatique à Beyrouth.

Les travaux se sont déroulés durant les années 2001 – 2002 et la réception a été prononcée en octobre 2002.

Le montant initial des marchés est d'environ 4.100.000,00 Euros.

Ph. DUBRASQUET
AMBASSADE de FRANCE au LIBAN
SERVICE de l'ÉQUIPEMENT

**BASSIL REAL
ESTATE INVESTMENT**

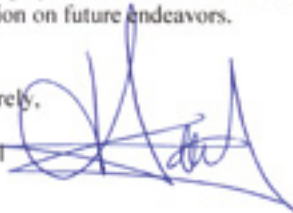
This is to certify that La Constructa s.a.l. General Contracting was selected to conduct the construction of the Convivium I Residential Building located in Gemayzeh, Lebanon.

We appreciate the combined knowledge and level of effort exhibited by your organization in the successful completion of this project. The way you constructively responded to variations during the course of works achieving the project to our satisfaction, was the kind of effort that is valued in the construction industry today.

We would highly recommend La Constructa as a general contractor and is looking forward for cooperation on future endeavors.

Yours Sincerely,

Karim Bassil



**BASSIL REAL
ESTATE INVESTMENT**



Bassil Real Estate Investment

To whom it may concern,

BREI s.a.l. certifies that La Constructa s.a.l. General Contracting was selected to conduct the construction of the Convivium II Residential Building in Gemayzeh, Lebanon.

La Constructa effectively completed the project on 30 June 2002, to our full satisfaction. During the construction and maintenance periods of the project, La Constructa honored its commitment to provide professional services and deliver quality products.

La Constructa displayed high adaptability and a constructive co-operational spirit which have been of value to us.

BREI s.a.l. wishes, therefore, to recommend La Constructa to the highest regard in any future projects.

Yours Sincerely,

Karim F. Bassil

BASSIL REAL ESTATE INVESTMENT



Bassil Real Estate Investment

To whom it may concern,

BREI s.a.l. certifies that La Constructa s.a.l. General Contracting was selected to conduct the construction of the Convivium III Residential Building in Saifi, Lebanon.

La Constructa completed the project on the 4th of April 2006, to our full satisfaction. Throughout the construction of the project, La Constructa displayed comprehensive knowledge, experience and effective communication that were essential for the overall success of this landmark project.

BREI s.a.l. would highly recommend La Constructa to the highest regard in any future projects.

Yours Sincerely,

Antoine El Khoury

**BYBLOS REAL
ESTATE INVESTMENT**



BREI

Saad Building, Gouraud Street, Gemayze,
Beirut, Lebanon. P.O Box: 175 233 Medawar.
Tel: +961 1 560 611, Fax: +961 1 560 664

www.breisal.com

REAL ESTATE DEVELOPERS

Beirut, May 30th, 2012

La Constructa

Dora – Banking center – 4th Floor
+961 1 259 870

Attention Mr. Roland Gebara

Ref. : "BRE/C5/LC/053/0461-12"
Subject : Recommendation Letter to LC

To whom it may concern,

BREI s.a.l. certifies that La Constructa s.a.l. General Contracting was selected to conduct the construction of the Convivium V Residential Building in Gemayzeh, Lebanon.

La Constructa effectively completed the project to our full satisfaction.
During the construction and maintenance periods of the project, La Constructa honored its commitment to provide professional services and deliver quality products.

La Constructa displayed high adaptability and a constructive co-operational spirit which have been of value to us.

BREI s.a.l. wishes, therefore, to recommend La Constructa to the highest regard in any future projects.

Yours Sincerely,

Karim F. Basil

CC: Rita Karam

**RBEIZ
98**

July 19, 2012

La Constructa
Dora, Beirut, Lebanon

Subject: Clemenceau 98- Beirut, Lebanon

Dear Sirs,

Now that the construction of Clemenceau 98 has come to an end, we wanted to take this opportunity to thank you for all your work on behalf of Rebeiz Family.

Working on a stringent deadline can be very stressful and there are inevitable issues which can keep you from meeting the project timetable. Your willingness to go above and beyond to meet the deadline without compromising the quality issues.

We appreciate the work all your team put into this job and we will definitely recommend you for future references.

Best regards,



CON TACTS

LEBANON

4th Floor, Banking Center
Dora Highway - Beirut, Lebanon
Tel: +961 1 259870
Fax: +961 1 259874
Part of KB Invest

E-mail: info@laconstructa.com
Website: www.laconstructa.com

SUDAN

4th Floor, Central Building, Str. 15
Al Amral - Khartoum, Sudan
Tel: +249 183 494310
Fax: +249 183 494311
Part of CTC Group

E-mail: info@laconstructa.com
Website: www.laconstructa.com

SYRIA

LOT 1288/25, 17 Palestine Str.
Al Barmaka, Damascus, Syria
Tel: +963 11 2124804
Fax: +963 11 2133641
Part of KB Invest

E-mail: info@laconstructa.com
Website: www.laconstructa.com